



Federaal Kenniscentrum voor de Gezondheidszorg
Centre Fédéral d'Expertise des Soins de Santé
Belgian Health Care Knowledge Centre

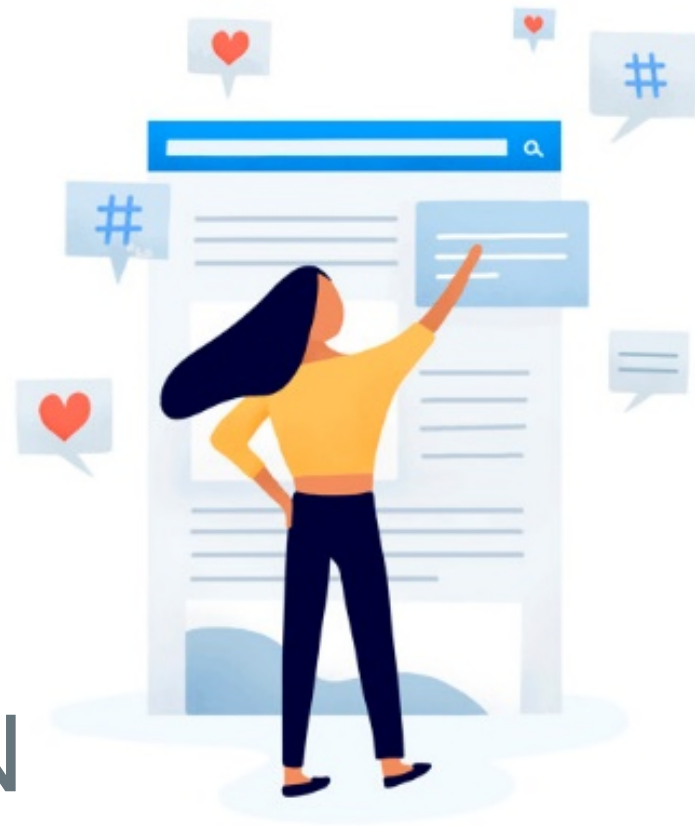
Information services continuity during the COVID-19 pandemics

Lessons learned from KCE (March 2020-October 2021)

PLAN

1. Introduction
2. Impact on KCE
3. Impact on the Librarian
4. Impact on the Information specialist
5. Discussion and conclusion





1. INTRODUCTION

- 2. Impact on KCE
- 3. Impact on the Librarian
- 4. Impact on the Information specialist
- 5. Discussion and conclusion



Federaal Kenniscentrum voor de Gezondheidszorg
Centre Fédéral d'Expertise des Soins de Santé
Belgian Health Care Knowledge Centre

**Federal Public Interest
Organisation
Established in 2003**

**Member of the Federal
Health Research System**

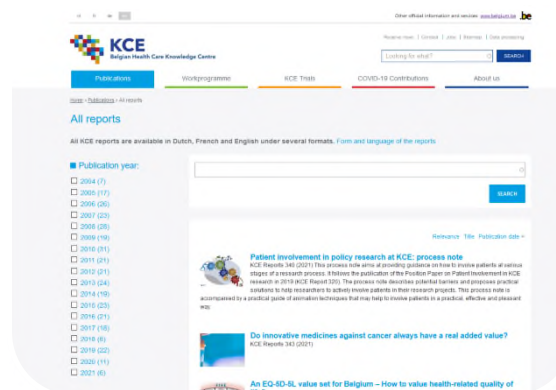
FOD-SPF

HGR-CSS

KCE

RIZIV-INAMI

Sciensano

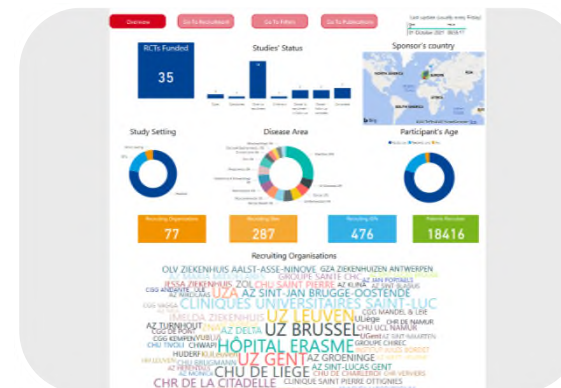


Research

- Evidence-based Practice (EBP-GCP)
- Health Services Research (HSR)
- Health Technology Assessment (HTA)
- Methods
- Dissemination



343
Published reports
since 2004



Trials

- Publically funded
- Non commercial
- Practice-oriented



35
Funded clinical trials
since 2016

Home working – as is



Home working

- 1 day / week for the majority
- 2 days / week for some

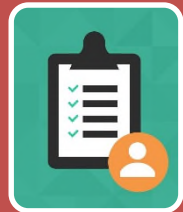


IT Infrastructure

- Laptop computer
- Virtual Private Network (VPN)
- Web conferencing tool

KCE tools for continuity

KM – PnO tools



Function
description



Survival kit role /
team w/ backup



Procedures

IT tools



Generic
mailboxes



Keepass for
departments

KCE library - public



72
People



47
Researchers



KCE library - services

3500+



Books

- Buy as you need
- Preferred location is expert's office

100+



Bibliographical databases

- Subscriptions: Cinahl, Cochrane, EconLit, Embase, MedLine, PsychInfo, Sociological abstracts, ...

10.000+



Journals

- Subscriptions: BMJ, Health Economics, Quality of life Research, ...



Articles

- On demand
- ILL, Pay per View

VDIC

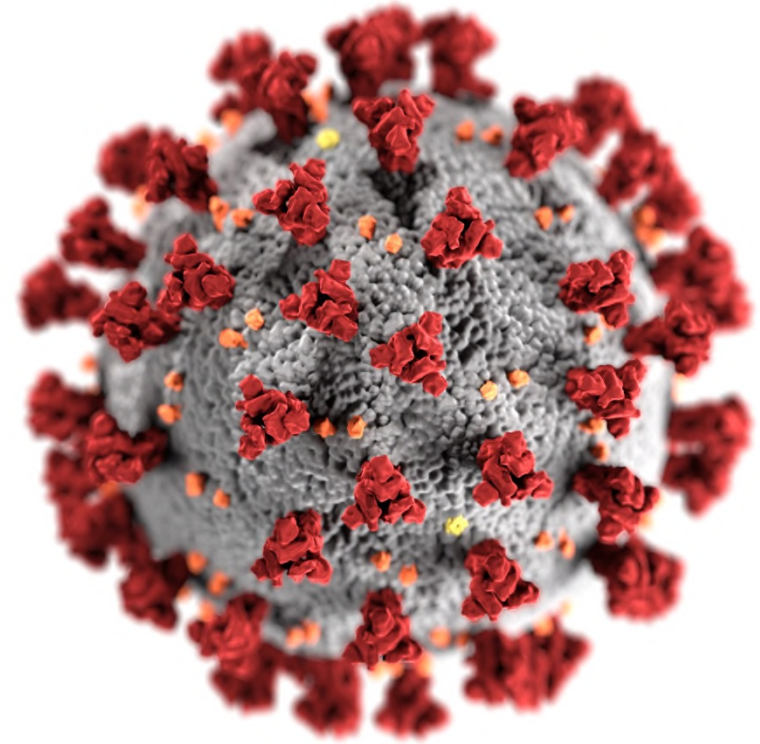
Vesalius
Documentation
and Information
Center



CEBAM Digital
Library for
Health (CDLH)



University of
Liège – Life
Sciences
Library



1. Introduction

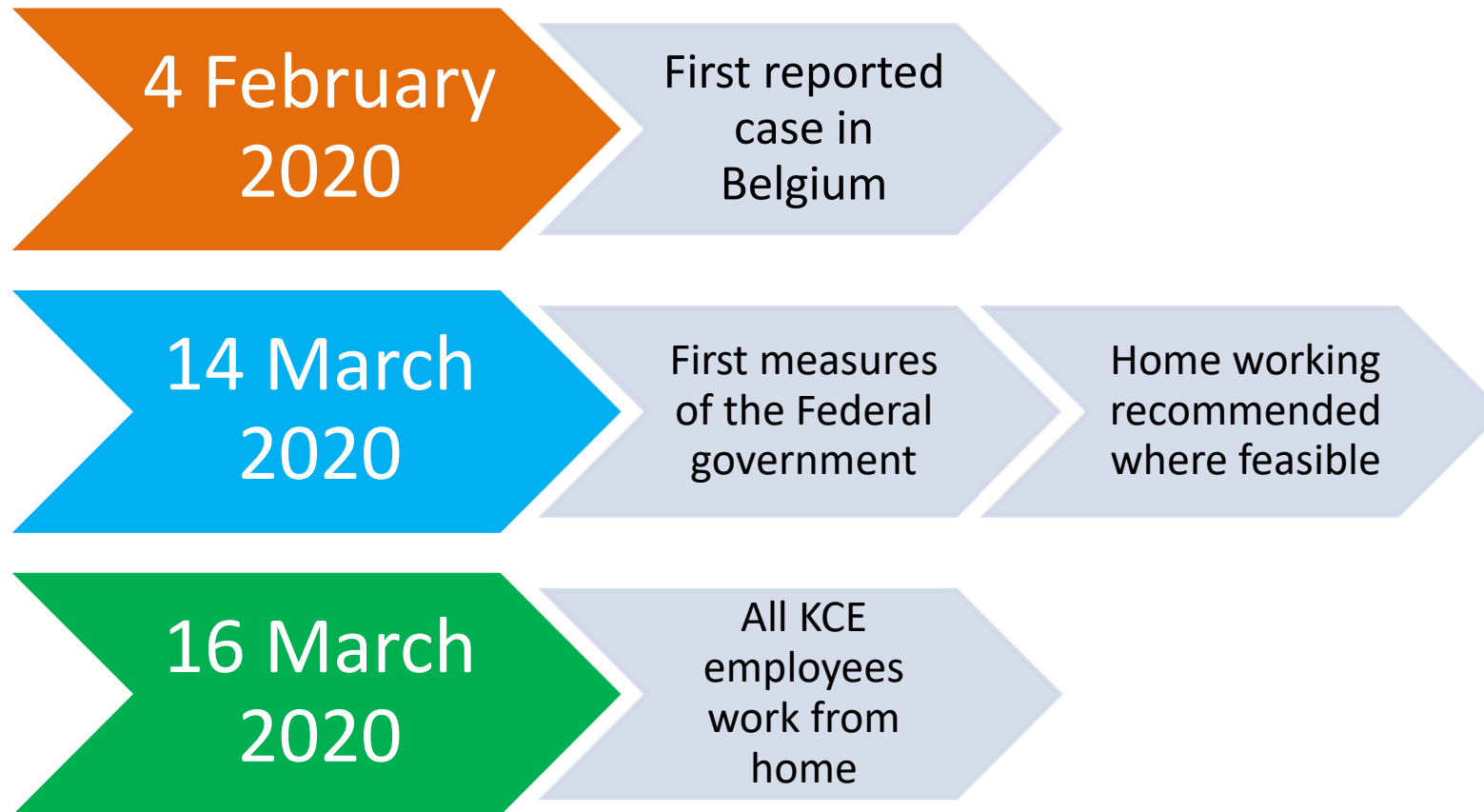
2. IMPACT ON KCE

3. Impact on the Librarian

4. Impact on the Information specialist

5. Discussion and conclusion

Milestones COVID-19 in Belgium



COVID-19 response @KCE

Research

1. Medical interventions that spread aerosols
2. Tromboprophylaxis
3. Transmission of the coronavirus by children
4. International comparison of testing and contact tracing strategies
5. Management of post-intensive care syndrome (PICS) for general practitioners
6. Outpatient care for Covid-19 patients in the context of saturation in Belgian hospitals
7. Needs and follow-up of long-term COVID-19 patients (ongoing study)
8. Prevention of the post-intensive care syndrome (PICS) (ongoing study)
9. Risk-benefit model for TTS events applied to the Johnson & Johnson vaccine
10. Rapid review of the evidence on a COVID-19 booster dose after a primary vaccination schedule
11. Vaccination coverage of staff in Belgian hospitals and nursing homes against COVID-19

International collaboration

1.  European Observatory on Health systems and Policies: Policy responses to the crisis
2.  EUnetHTA COVID-19 response - Rolling Collaborative Reviews on COVID-19 (camostat & nafamostat)
3.  EUnetHTA Rapid Collaborative Review (diagnostic methods)
4. Participation in the Scientific Advisory Board EU-RESPONSE

Trials

1. **COV-AID** (combinations of drugs blocking interleukin 1 and 6)
2. **DAWN-plasma** (administration of plasma from patients cured of COVID-19 to hospitalized patients)
3. **DAWN Camostat** (efficacy of Camostat for COVID-19 patients presenting to ambulatory care)
4. **CONFIDENT** (administration of plasma from patients cured of COVID-19 to intensive care patients)
5. **DisCoVeRy** (participation in the international study coordinated by INSERM - France)
6. **IMCOVAS** (assessment of different vaccines schedules for 3 vaccines against COVID-19 (Pfizer, Moderna and AstraZeneca))



1. Introduction
2. Impact on KCE

3. IMPACT ON THE LIBRARIAN

4. Impact on the Information specialist
5. Discussion and conclusion



Standard services ⁽¹⁾

Stopped

- Access to paper resources
- Paper journals preparation

Maintained

- Access to electronic resources
- Articles copies delivery

Standard services ⁽²⁾

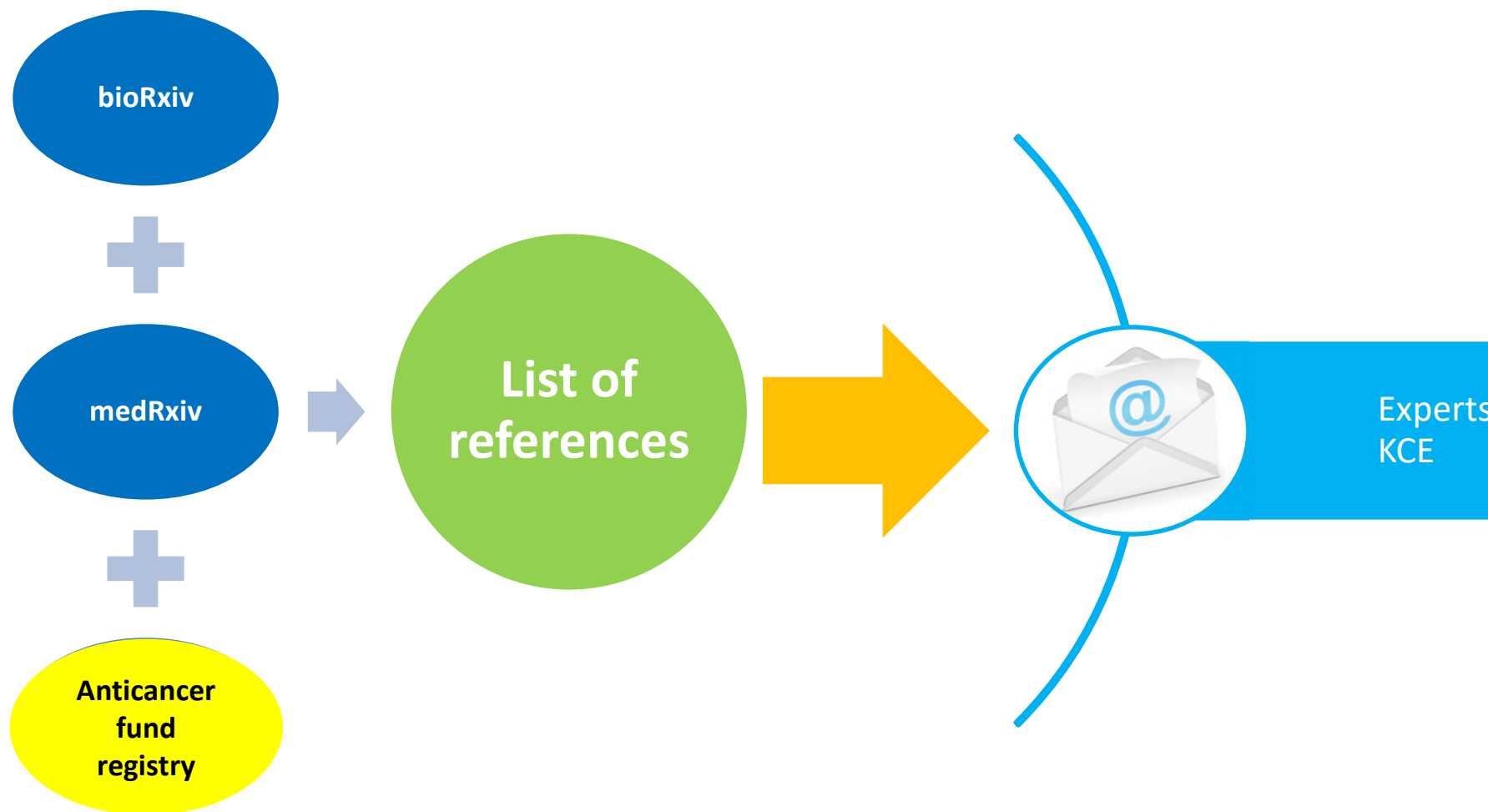
Adjusted

- Monograph delivery
 - At home
- External researchers request
 - Database search based on expert strategy

NEW SERVICES ⁽¹⁾

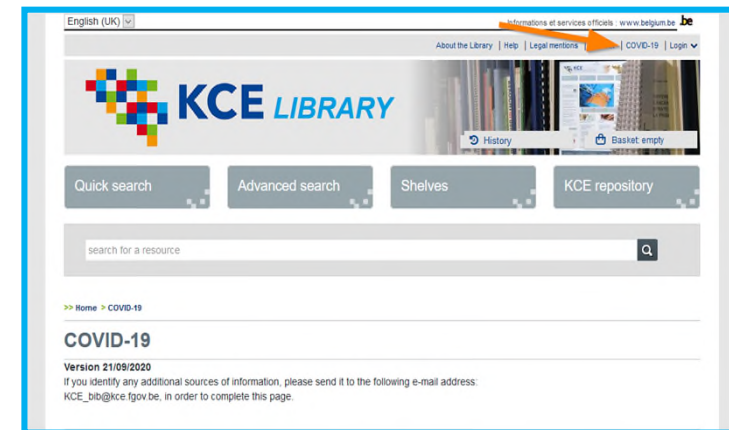


Alert on pre-print articles & clinical studies



NEW SERVICES ⁽¹⁾

List of COVID-19 resources

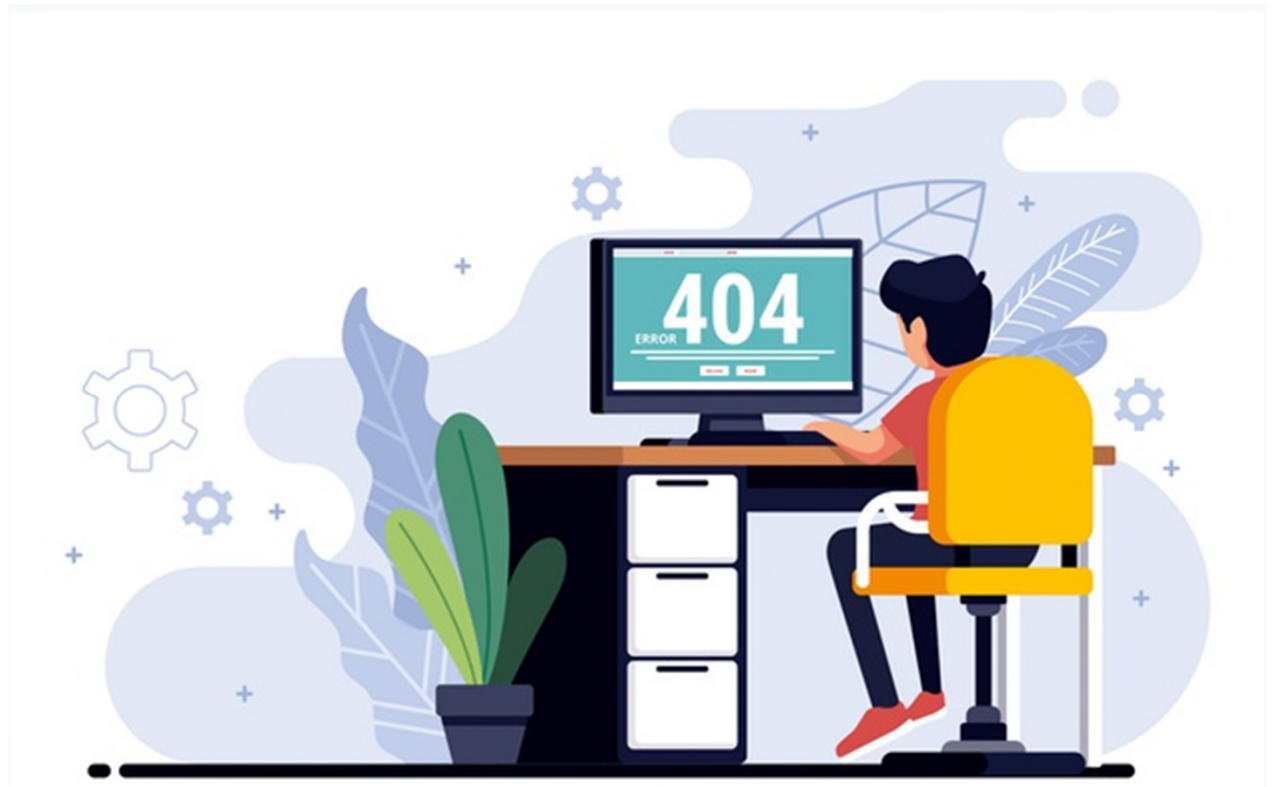


Experts KCE



Sciensano

1. Introduction
2. Impact on KCE
3. Impact on the Librarian



4. IMPACT ON THE INFORMATION SPECIALIST

5. Discussion and conclusion



Monitoring of generic search strategies

"COVID-19" Embase.com (2020-03-30)

#1	wuhan:ab,ti,kw AND (pneumonia:ab,ti OR 'lung disease':ab,ti) AND 2020:py
#2	hubei:ab,ti,kw AND (pneumonia:ab,ti OR 'lung disease':ab,ti) AND 2020:py
#3	'covid 19*':ab,ti,kw
#4	'covid 2019*':ab,ti,kw
#5	'covid2019*':ab,ti,kw
#6	'covid19*':ab,ti,kw
#7	'ncov 2019*':ab,ti,kw
#8	'ncov 19*':ab,ti,kw
#9	'2019-ncov':ab,ti,kw
#10	'19-ncov':ab,ti,kw
#11	'sars-cov-19':ti,ab,kw
#12	'sars-cov-2019':ti,ab,kw
#13	'sars-cov-2':ti,ab,kw
#14	#3 OR #4 OR #5 OR #6 OR #7 OR #8 OR #9 OR #10 OR #11 OR #12 OR #13
#15	#14 AND 2020:py
#16	((new OR novel OR newly OR emerging) NEAR/3 virus):ab,ti,kw) AND pneumonia:ab,ti,kw AND 2020:py
#17	coronavirus:ab,ti,kw AND 2020:py
#18	'corona virus':ab,ti,kw AND 2020:py
#19	((outbreak OR surge) NEAR/3 pneumonia):ab,ti,kw) AND china:ab,ti,kw AND 2020:py
#20	#1 OR #2 OR #15 OR #16 OR #17 OR #18 OR #19
#21	('coronavirinae'/exp OR 'coronavirinae' OR 'coronaviridae infection'/exp OR 'coronaviridae infection' OR 'coronavirus disease 2019'/exp OR 'coronavirus'/exp OR 'coronavirus infection'/de) AND 2020:py
#22	#20 OR #21

*Nota: Lines #21 et #22 can be removed to enhance specificity with impacting sensitivity too much.
Source: Adapted from a search strategy shared through EAHIL*

Monitoring of thesaurus updates

Concept	MeSH term (entry date)	Emtree term (entry date)
Virus	severe acute respiratory syndrome coronavirus 2 (14/01/2020)	Severe acute respiratory syndrome coronavirus 2 (2020)
Disease	COVID-19 (13/02/2020)	coronavirus disease 2019 (2020)
Detection	COVID-19 diagnostic testing (26/03/2020)	
Prevention	COVID-19 vaccine (26/03/2020)	
Treatment	COVID-19 serotherapy (28/03/2020) COVID-19 drug treatment (28/03/2020)	

Nouveaux concepts ajoutés aux thesaurus de bases de données bibliographiques biomédicales (consultés le 17/08/2020)
 Légende : MeSH (Medical Subject Headings) : thesaurus de la base bibliographique MedLine ; Emtree : thesaurus de la base bibliographique Embase



Development of generic search strategies

Cochrane Database of Systematic Reviews	Embase (Embase.com)	MedLine (OVID)
("covid19" or "covid2019" or "covid-19" or "covid-2019" or "ncov-2019" or "ncov-19" or "2019-ncov" or "19-ncov" or "sars-cov-19" or "sars-cov-2" or "sars-cov2" or "novel coronavirus"):ab,ti	covid19:ab,ti,kw OR covid2019:ab,ti,kw OR 'covid 19':ab,ti,kw OR 'covid 2019':ab,ti,kw OR 'ncov 2019':ab,ti,kw OR 'ncov 19':ab,ti,kw OR '2019 ncov':ab,ti,kw OR '19 ncov':ab,ti,kw OR 'sars cov 19':ab,ti,kw OR 'sars cov 2':ab,ti,kw OR 'sars cov2':ab,ti,kw OR 'novel coronavirus':ab,ti,kw	(covid19 or covid2019 or covid-19 or covid-2019 or ncov-2019 or ncov-19 or 2019-ncov or 19-ncov or sars-cov-19 or sars-cov-2 or sars-cov2 or novel coronavirus).ab,ti,kf

.ab = abstract ; .ti = title ; kw = keywords ; .kf = Keyword Heading Word

Source: Jespers V., Roberfroid D. Aerosol generating procedures. COVID-19 - KCE Contributions: 2021-04-09



Development of specific search strategies

"long-covid" OVID Medline (2021-05-03)

1covid*.mp. (126954)

2sars-cov*.mp. (82940)

3ncov*.mp. (1926)

4"coronavirus disease 2019".mp. (24078)

5"severe acute respiratory syndrome coronavirus 2".mp. (13292)

61 or 2 or 3 or 4 or 5 (134025)

7chronic*.mp. (1460949)

8complicat*.mp. (3313678)

9continu*.mp. (1155168)

10linger*.mp. (2871)

11long*.mp. (2393207)

12ongoing.mp. (172609)

13persist*.mp. (502688)

14post*.mp. (3004174)

15prolong*.mp. (395726)

16recurr*.mp. (739192)

17sequel*.mp. (80497)

18surviv*.mp. (1514255)

197 or 8 or 9 or 10 or 11 or 12 or 13 or 14 or 15 or 16 or 17 or 18 (10380017)

206 and 19 (47717)

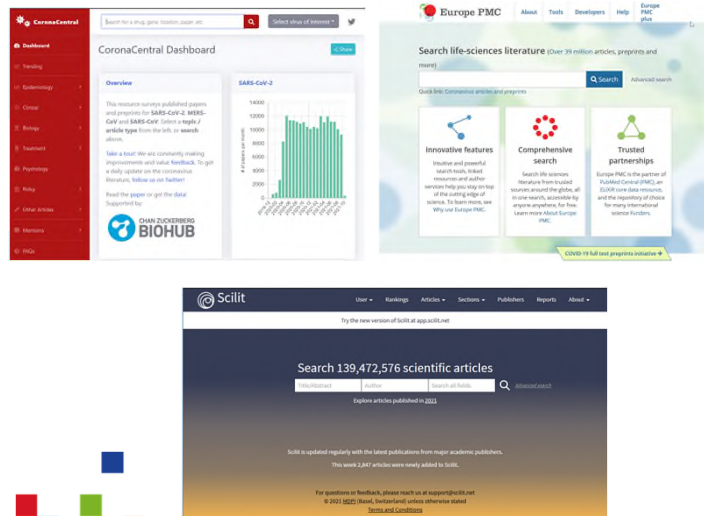
((covid* or sars-cov* or ncov* or "coronavirus disease 2019" or "severe acute respiratory syndrome coronavirus 2") adj2 (chronic* or complicat* or continu* or linger* or long* or ongoing or persist* or post* or prolong* or recurr* or sequel* or surviv*)).mp. (5646)

Additional sources and controls

e.g. Study 2020-04 Long COVID

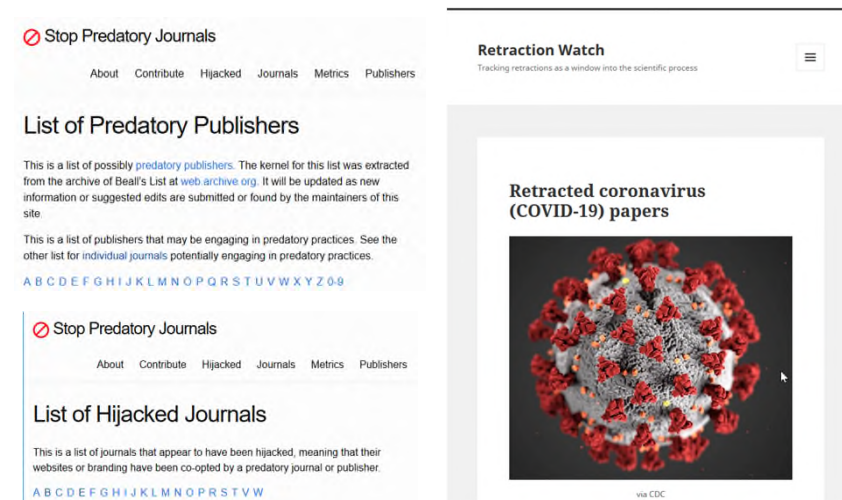
Pre-Print servers

- Coronacentral
- EuropePMC
- SciLit



Quality control

- Predatory publishers
- Hijacked journals
- Retraction watch

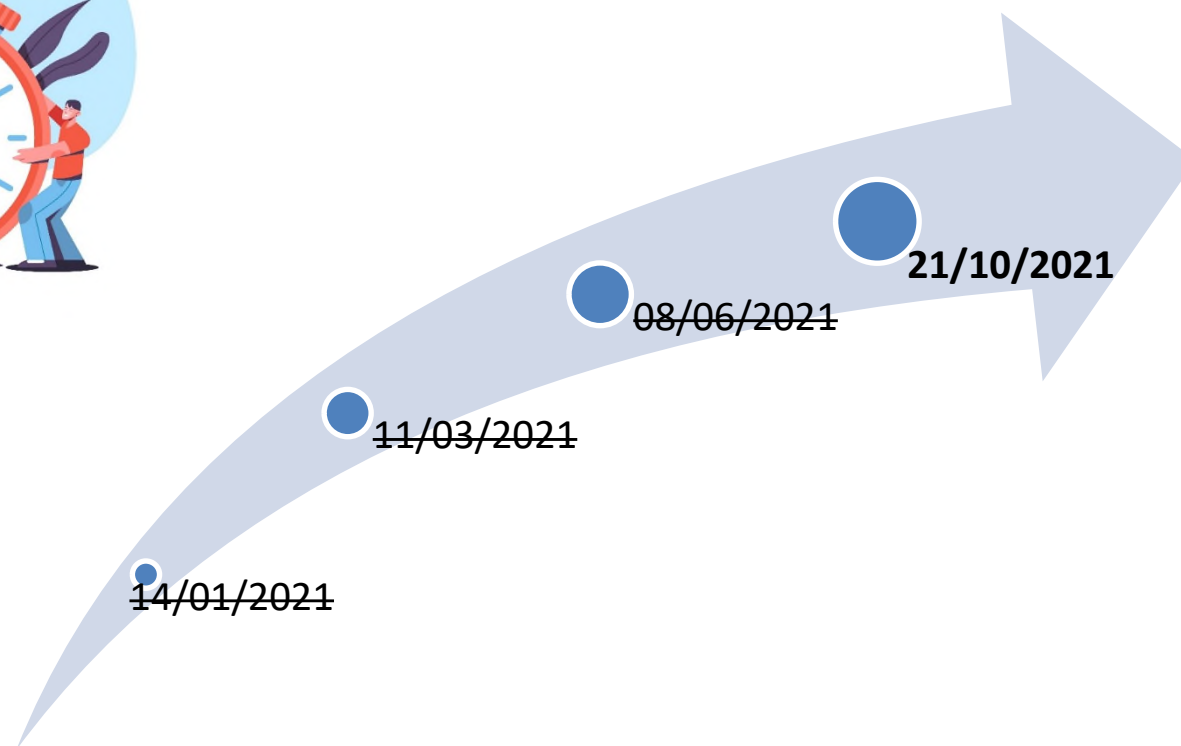


1. Introduction
2. Impact on KCE
3. Impact on the Librarian
4. Impact on the Information specialist



5. DISCUSSION & CONCLUSION

Impact on ... live congress



Impact on continuity



Infrastructure



Rules



Culture

Impact on library services



Collections

- Backlog to manage

List of resources

- Last update: 2020-09-21
- 33 recently updated, 39 old or no update date, 7 not active

Bibliography

- Still updated and distributed

Study registers

- Anticancer fund registry stopped 2020-08-20 and refers to other products

Impact on colleagues



Home working – to be

- Up to 3 days / week



Prevention

- Pay attention to well being

Impact on... on site working



13/03/2020

- Forbidden

03/06/2020

- Not mandatory
- 6 people / floor
- 2 days / week max

25/06/2020

- Not mandatory
- 10 people / floor
- 3 days / week max

01/09/2021

- Not mandatory
- 15 people / floor
- 2 days / week max

01/10/2021

- Not mandatory
- Unlimited people
- 1-2 days/week recommended

Barriers to access knowledge



Off site access

- Petition

Subscription based access

- Timely free access

Slowness peer reviewing

- Preprint servers
- Fast track

Conclusions



Ensuring the continuity of accesses to the library collections is essential



Electronic collections and IT infrastructure may facilitate such continuity



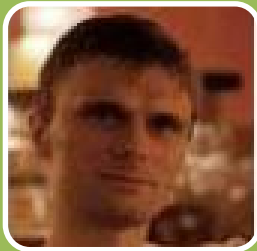
In a crisis situation, barriers to access to knowledge must be removed

Thank you!



Luc HURLAY: Information manager

- Resources access management



Nicolas FAIRON: Information specialist

- Support for literature retrieval



Patrice CHALON: Knowledge manager

- Support for work procedure and continuity

Further readings

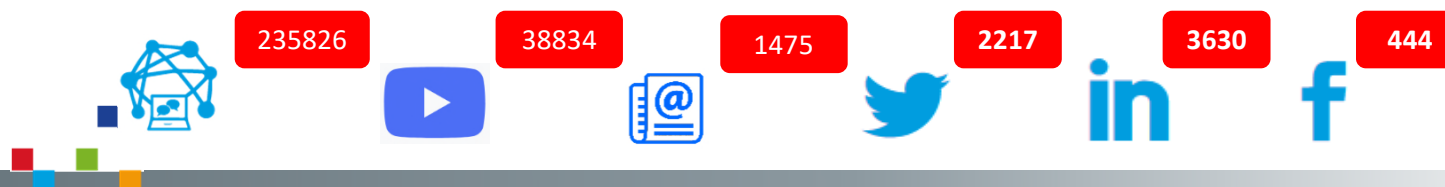
- Bladen voor Documentatie 2020/3 (december 2020) Under Press. <https://www.abd-bvd.be/nl/publicaties/bladen-voor-documentatie/>
- Dag van de federale bibliothecaris 2020 <https://bibforum.fgov.be/>
- Journal of the European Association for Health Information and Libraries JEAHIL (Vol16, n°3) <http://ojs.eahil.eu/ojs/index.php/JEAHIL/issue/view/1>

Useful links

- <https://kce.fgov.be/en/covid-19-contributions>
- https://kce.docresources.info/index.php?lvl=cmepage&pageid=6&id_rubrique=137
- <https://predatoryjournals.com/>
- <https://retractionwatch.com/>



Follow us



Chalon Patrice, Hourlay Luc, Nicolas Fairon. Information services continuity during the COVID-19 pandemics: *Lessons learned from KCE (March 2020-October 2021). Felnet - COVID-19 infecteert I&D, 2021-10-21, Brussels, Belgium.*

Images credits

- [https://en.wikipedia.org/wiki/Portal:COVID-19#/media/File:SARS-CoV-2_\(CDC-23312\).png](https://en.wikipedia.org/wiki/Portal:COVID-19#/media/File:SARS-CoV-2_(CDC-23312).png)
- <https://www.creativecommons.org/>
- https://www.flaticon.com/free-icon/cloud-computing_356490
- https://www.flaticon.com/free-icon/open-lock_598630
- https://www.flaticon.com/free-icon/reader_4213477
- https://www.freepik.com/free-photo/hand-holding-question-mark_3478959.htm
- https://www.freepik.com/free-vector/certified-checkmark-tick-rubber-stamp-set-design_8866005.htm
- https://www.freepik.com/free-vector/content-editor-editing-feed-vector_3780783.htm
- https://www.freepik.com/free-vector/error-404-concept-landing-page_5060706.htm
- https://www.freepik.com/free-vector/group-therapy-illustration_8271022.htm
- https://www.freepik.com/free-vector/isometric-books-reading-composition-with-people-educational-literature-ebook-reader-electronic-library-phone-laptop-isolated_10055561.htm
- https://www.freepik.com/free-vector/male-cartoon-office-worker-with-high-low-battery_18733899.htm
- https://www.freepik.com/free-vector/manager-prioritizing-tasks-list_7732645.htm
- https://www.freepik.com/free-vector/organization-flat-icon_4167280.htm
- https://www.freepik.com/free-vector/people-library-flat-vector-illustration_9176169.htm
- https://www.freepik.com/free-vector/telecommuting-concept_7533433.htm
- https://www.freepik.com/free-vector/telecommuting-concept_7533433.htm
- https://www.freepik.com/free-vector/telecommuting-concept-with-woman_7333717.htm
- https://www.freepik.com/free-vector/time-management-concept_14449321.htm

Copyrights

